

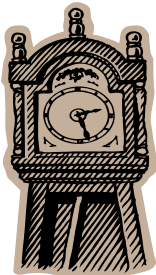
Welcome Back to ASEP

Labor Day Schedule:

ASEP will be closed for Labor Day on September 1 and 4, 2017.

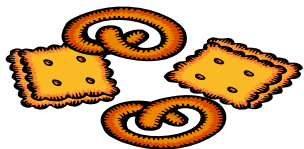
ASEP Hours

ASEP is open from the time the bell rings until 6pm.



We want you!

Parents are welcome at ASEP anytime. We encourage you to share a talent and hobby with our students. Please contact your site coordinator.



Snacks

Snacks at ASEP are provided by the school child nutrition department. Children are welcome to bring a snack from home to be enjoyed after 5pm.



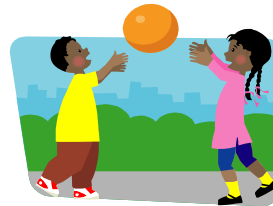
Fee and Payment Options



This year we will continue to prorating our weekly fees. You will only pay for the days we are open. Payment options are: cash, checks made payable to ASEP, or credit card through www.lunchprepay.com. Checks are required to have the check writer's name, address and phone number printed on each check. Payments are due on Friday for the upcoming week. More information is located on page 2 of this newsletter. Contact your site coordinator if you have questions.

ASEP = Activity

Our students are very active outside every day. Please be sure your child is dressed for the weather and activities.



Medications



Our licensing requires that adults transport student medications to ASEP. Please bring medication in its original container. You will be asked to complete forms to ensure that medicine is properly dispensed to your child. We require a release form if he or she will be using sunscreen or lip balm. Contact your site coordinator for the appropriate forms.

NO Cell Zone

We ask that you refrain from using your cell phone when you pick up your child. Thank you!



ASEP Newsletter

Volume 6 Issue 1

August-September 2017



ID's Please

In order to ensure your child's safety, we may ask you to show us your driver's license when you pick up your child. We will only release students to adults that are on the authorized pick up list. Please be sure to sign your child out each day and note the time.

Your Site Coordinators:

- CHES:** Janice Darlington
995-6196 x3662
- FFES:** Kathy Duncan
449-7058
- KHES:** Stephanie Hughes
261-2313 x1628
- MES:** Shelawn Burton
473-2742 x1430
- NHES:** Marsha Riibner-Cady 216-8613

Director:
Marsha Riibner-Cady
216-8613

Quick Reference for ASEP information for 2017-18:

Payment is due each Friday for the upcoming week. We accept cash, checks, and credit cards.

Number of children	Weekly Fees	Approximate	Approximate
		Monthly Fees	Yearly Fees (39 weeks)
1 CHILD	\$55	\$220	\$1945
2 CHILDREN	\$85	\$340	\$2995
3 CHILDREN	\$110	\$440	\$4290
4 CHILDREN	\$145	\$580	\$5655

ASEP Closed Dates:

ASEP is closed when school is closed and on any Saturday make-up days. ASEP will be closed the following early dismissal days:

September 1, 2017, November 22, 2017, January 12, 2018, March 30, 2018, May 25, 2018, and June 6, 2018.

ASEP Hours of Operation:

From the time the bell rings until 6pm, this includes all early dismissal days not noted above.

Facilities Information

Office Hours: 11:00 – 2:00 pm for Site Coordinators, below is their contact information:

Cape Hatteras Elementary School, Site Coordinator-Janice Darlington,
darlingtonja@daretolearn.org, 252-995-6196 ext. 3662, 47500 Middle Ridge Tr., Buxton,
NC 27920

First Flight Elementary School, Site Coordinator-Kathy Duncan, duncanka@daretolearn.org,
252-449-7058 press 2 or #252-441-1111 EXT. 2044, 107 Veterans Dr., Kill Devil Hills,
NC 27948

Kitty Hawk Elementary School, Site Coordinator-Stephanie Hughes,
hughesst@daretolearn.org, 252-261-2313 ext. 1628, 16 S. Dogwood Trail, Kitty Hawk,
NC 27949

Manteo Elementary School, Site Coordinator-Shelawn Burton-Gibbs,
burtonsh@daretolearn.org, 252-473-2742 ext. 1430, 701 N. Hwy. 64/264. Manteo,
NC 27954

Nags Head Elementary School, Acting Site Coordinator-Marsha Riibner Cady,
Riibner-cadya@daretolearn.org, 252-216-8613, 3100 S. Wrightsville Ave. Nags Head,
NC 27959

ASEP Director– Marsha Riibner-Cady, riibner-cadya@daretolearn.org, 252-216-8613,
office at NHES.